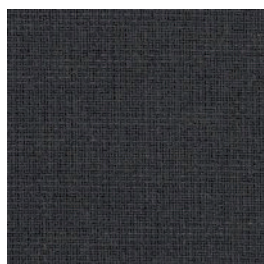
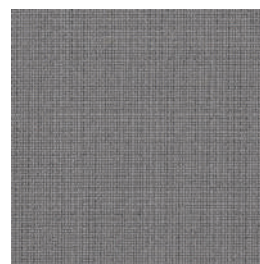


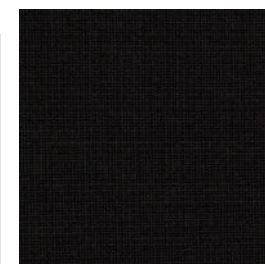
FA60003



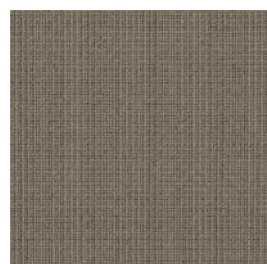
FA60019



FA60078



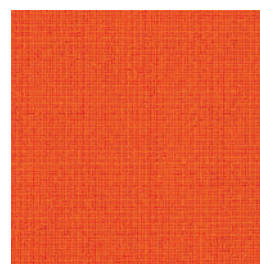
FA60999



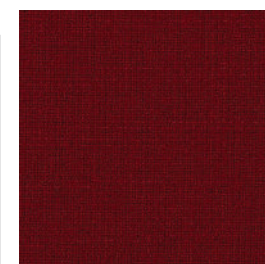
FA61003



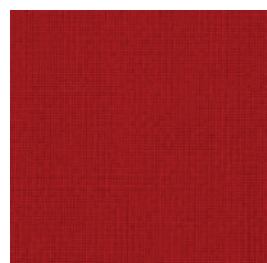
FA61060



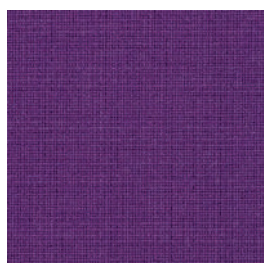
FA63016



FA64058



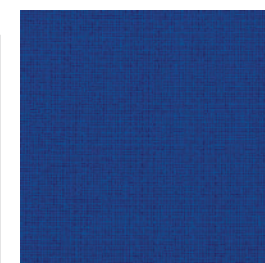
FA64089



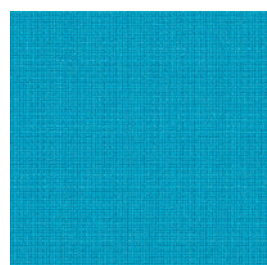
FA65084



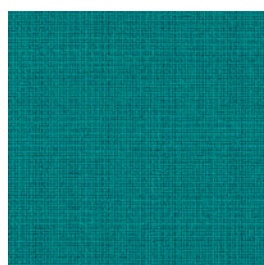
FA66071



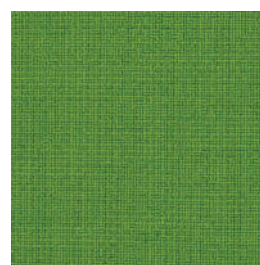
FA66075



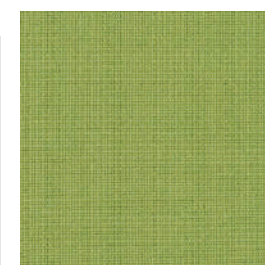
FA66133



FA67016



FA68035



FA68145

■ Pattern book
vzorník potahových látek
Bezugsstoffe-Musterbuch

Fame

Composition/Složení/Zusammensetzung	95% Wools of New Zealand / 5% Polyamide		
Weight/Váha/Gewicht	630 g/m		
Width/Šírka/Breite	140 cm		
Abrasion resistance/Oděruvzdornost/Scheuerfestigkeit	Martindale	200 000 cycles	EN ISO 12947:2
Light fastness/Stálobarevnost na světle/Lichtechtheit		5 – 7	EN ISO 105-B02
Fastness to rubbing/Stálobarevnost v oťěru/Reibecktheit		4 – 5	EN ISO 105×12
Pilling/Žmolkování/Pilling		4	EN ISO 12945-2
Flammability/Ohnivzdornost/Feuersicherung	BS EN 1021 1&2 BS 5852 Crib 5		ÖNORM B 3825-B1-3800-Q1 UK

- For standard care regularly use vacuum cleaner. Clean with damp cloth.
- Pro běžné čištění a údržbu pravidelně vysávejte vysavačem. V případě potřeby čistěte hadříkem navlhčeným vodou.
- Zur standardmäßigen Pflege bitte regelmäßig absaugen. Reinigen Sie den Stoff mit einem feuchten Tuch.

- Shades of upholstery fabrics may differ slightly within the various batches of delivery.
- Odstíny potahových látek mohou mít mírné odchylky v rámci různých dodávek.
- Bei Stoffen sind handelsübliche Farbabweichungen je nach Produktionscharge möglich.