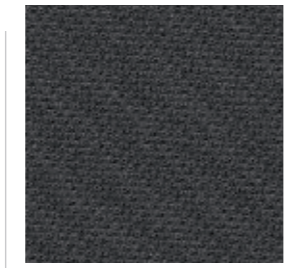
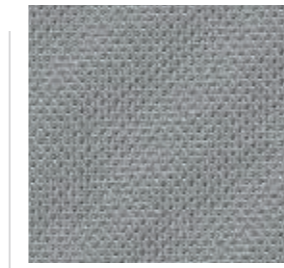




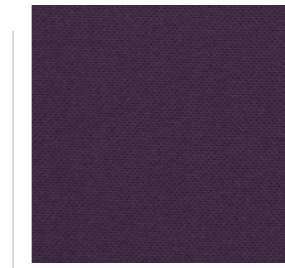
60999



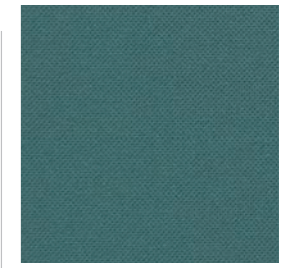
60025



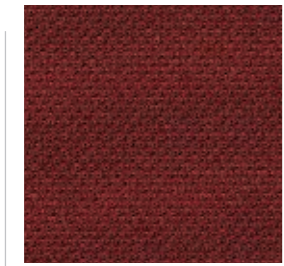
60011



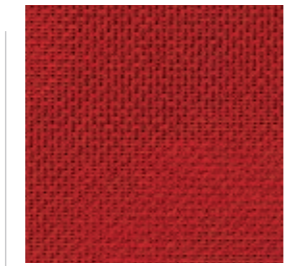
65037



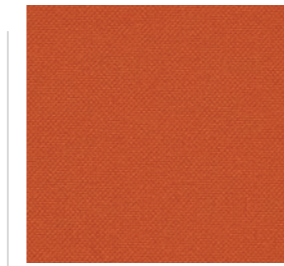
67030



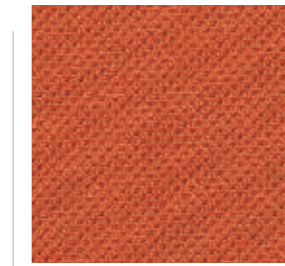
64092



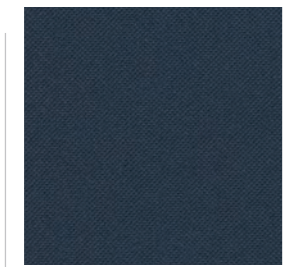
64089



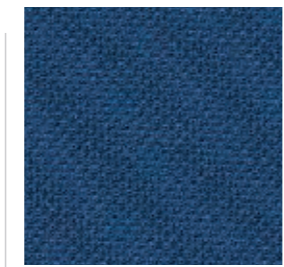
63056



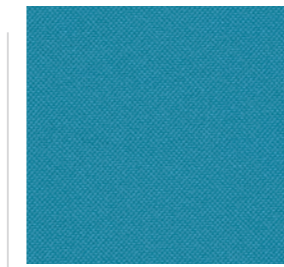
63034



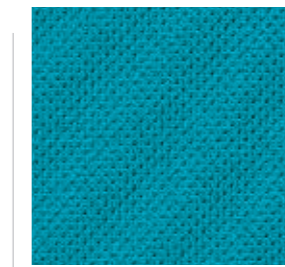
66057



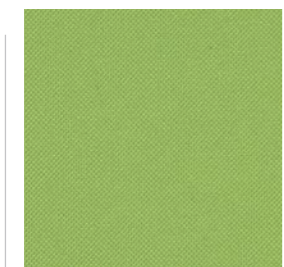
66062



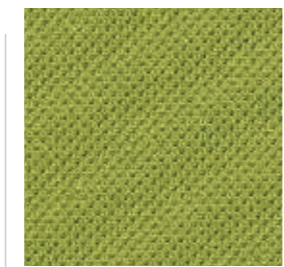
66086



66063



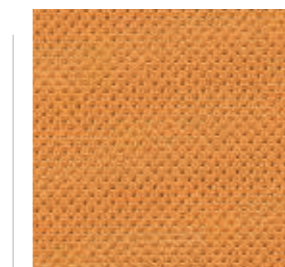
68099



68054



61078



63033

■ Pattern book
Vzorník potahových látek
Bezugsstoffe-Musterbuch

Style

Composition/Složení/Zusammensetzung	100% Polyester	
Weight/Váha/Gewicht	530 g/m	
Width/Šířka/Breite	150 cm	
Abrasion resistance/Oděruvzdornost/Scheuerfestigkeit	Martindale 120 000 cycle	BS EN ISO 12947-2
Light fastness/Stálobarevnost na světle/Lichtechtheit	5 - 7	BS EN ISO 105-B02
Fastness to rubbing/Stálobarevnost v oděru/Reibechtheit	4 - 5	EN ISO 105x12
Pilling/Žmolkování/Pilling	4 - 5	BS EN ISO 12945-2
Flammability/Ohnivzdornost/Feuersicherung	Önorm B 3825	EN 1021 1&2

- For standard care regularly use vacuum cleaner. Clean with damp cloth.
- Pro běžné čištění a údržbu pravidelně vysávejte vysavačem. V případě potřeby čistěte hadříkem navlhčeným vodou.
- Zur standardmäßigen Pflege bitte regelmäßig absaugen. Reinigen Sie den Stoff mit einem feuchten Tuch.

- Shades of upholstery fabrics may differ slightly within the various batches of delivery.
- Odstíny potahových látek mohou mít mírné odchylky v rámci různých dodávek.
- Bei Stoffen sind handelsübliche Farbabweichungen je nach Produktionscharge möglich.